



Architect Richard Freisinger / Photograph by Pia Odorizzi

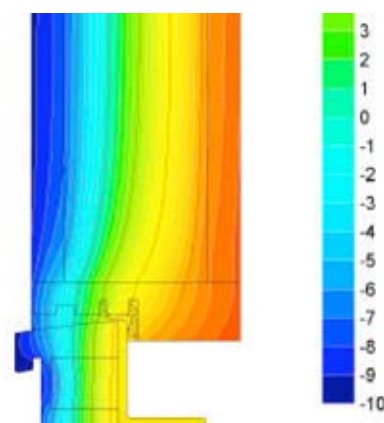
## OPTIWIN-Frostkorken Passive House Doors

Your home is your castle and you want to feel at home there. For this, doors must retain a high enough surface temperature to ensure no loss of radiant heat and no cold air near the door area.

This is why Optiwin Frostkorken house doors have cork insulation.

This is the only wooden door certified by the Passive House Institute that contains exclusively ecological insulation.

Custom designs are of course available.



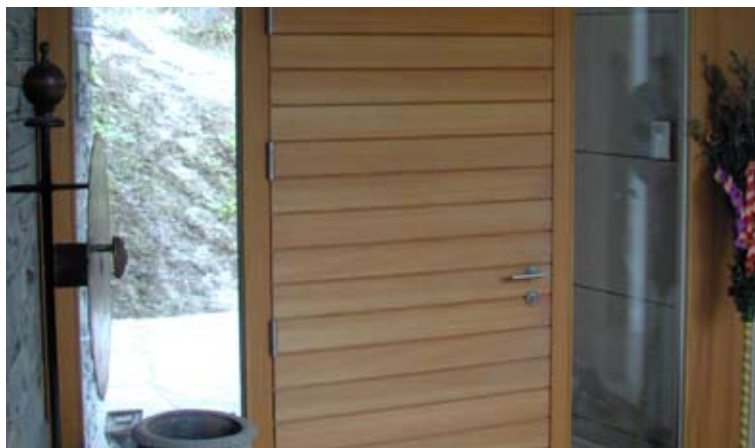
Isotherms of lower section of Frostkorken

## Details

- Door leaf thickness: 120mm
- Cork insulation
- Integrated moisture barrier
- All wood types popular for house doors possible
- Custom designs possible
- Anti-theft locks and bolting mechanisms available
- $U_D$  - value: 0,64
- Climate class III verified by Holzforschung Austria (Research and Test Institute)



Frostkorken with side panel



Frostkorken with shuttering boards



**Freisinger  
Fensterbau GmbH**  
Wildbichlerstraße 1  
A-6341 Ebbs

Tel: +43 (0) 5373 46046  
Fax: +43 (0) 5373 40646-40  
office@freisinger.at  
www.freisinger.at

**OPTIWIN**  
DER FENSTERPAKT

www.optiwin.net